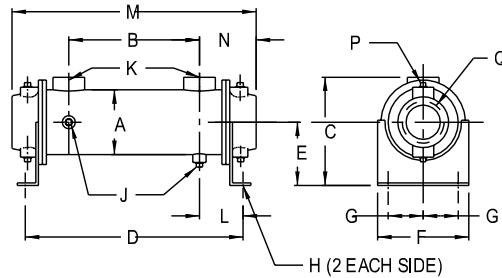
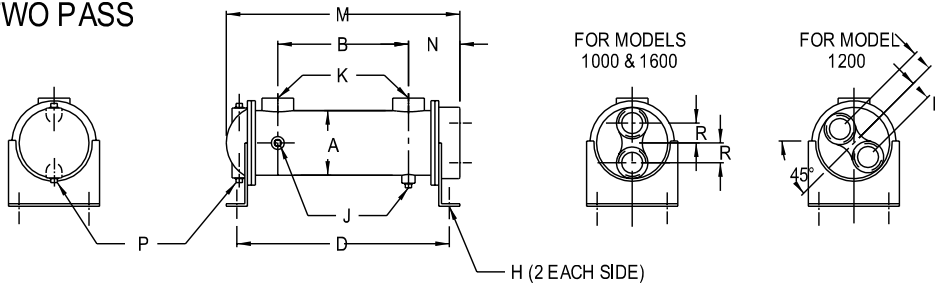


## --CC SERIES-- DIMENSIONS

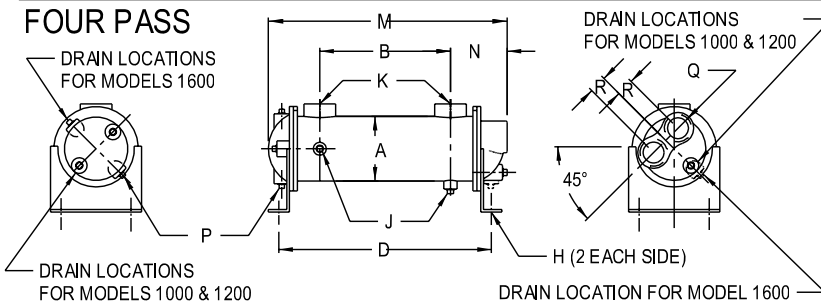
### SINGLE PASS



### TWO PASS



### FOUR PASS



SINGLE PASS				
MODEL	M	N	P NPTF.	Q NPTF.
CC-614	17.38	3.69	(2)	1.50
CC-624	27.38		0.38	
CC-814	17.88		(2)	
CC-824	27.88	4.44	0.38	2.00
CC-836	39.88			
CC-1014	18.81		(4)	
CC-1024	28.81	4.90	0.38	2.00
CC-1036	40.81			
CC-1224	29.12		(4)	
CC-1236	41.12	5.44	0.50	3.00
CC-1248	53.12			
CC-1260	65.12			
CC-1624	31.25			
CC-1636	43.25			
CC-1648	55.25			
CC-1660	67.25	7.12	(4)	4.00
CC-1672	79.25		0.50	
CC-1684	91.25			
CC-1696	103.25			

TWO PASS					
MODEL	M	N	P NPTF.	Q NPTF.	R
CC-614	17.38	3.69	(2)	1.00	1.00
CC-624	27.38		0.38		
CC-814	17.88		(2)		
CC-824	27.88	4.44	0.38	1.25	1.00
CC-836	39.88				
CC-1014	18.81		(2)		
CC-1024	28.81	4.90	0.38	1.50	1.19
CC-1036	40.81				
CC-1224	28.63		(2)		
CC-1236	40.63	5.12	0.50	2.00	1.44
CC-1248	52.63				
CC-1260	64.63				
CC-1624	30.75		(2)		
CC-1636	42.75				
CC-1648	54.75				
CC-1660	66.75	6.88	0.50	2.50	1.88
CC-1672	78.75				
CC-1684	90.75				
CC-1696	102.75				

### COMMON DIMENSIONS

MODEL	A	B	C	D	E	F	G	H	L	J NPTF.	K NPTF.	WEIGHT (LBS.)
CC-614	3.25	10.00	5.06	16.38	2.75	4.50	1.62	0.44 Dia.	3.19	(2)	1.00	17
CC-624		20.00		26.38						0.38		24
CC-814		9.00		16.62						(2)		32
CC-824	4.25	19.00	6.38	26.62	3.50	4.25	1.75	0.44 Dia.	3.81	0.38	1.50	41
CC-836		31.00		38.62								53
CC-1014		9.00		17.12						(2)		43
CC-1024	5.12	19.00	7.43	27.12	4.00	6.75	2.00	0.44x1.00	4.06	0.38	1.50	57
CC-1036		31.00		39.12								72
CC-1224		18.25		27.12						(2)		85
CC-1236		30.25	8.81	39.12	4.62	7.50	2.50	0.44x0.88	4.44	(2)	2.00	110
CC-1248		42.25		51.12						0.38		135
CC-1260		54.25		63.12								160
CC-1624		17.00		27.50						(2)		140
CC-1636		29.00		39.50								190
CC-1648		41.00		51.50								229
CC-1660	8.00	53.00	12.13	63.50	6.50	8.62	3.50	0.44x1.00	5.25	(2)	3.00	260
CC-1672		65.00		75.50						0.38		300
CC-1684		77.00		87.50								315
CC-1696		89.00		99.50								335

FOUR PASS					
MODEL	M	N	P NPTF.	Q NPTF.	R
CC-614	17.38	3.69	(2)	0.75	0.75
CC-624	27.38		0.38		
CC-814	17.88		(2)		
CC-824	27.88	4.44	0.38	0.75	0.88
CC-836	39.88				
CC-1014	18.81		(3)		
CC-1024	28.81	4.90	0.38	1.00	1.34
CC-1036	40.81				
CC-1224	29.12		(2)		
CC-1236	41.12	5.56	0.38	1.50	1.40
CC-1248	53.12		(1)		
CC-1260	65.12		0.50		
CC-1624	31.25				
CC-1636	43.25				
CC-1648	55.25				
CC-1660	67.25	7.12	(3)	2.00	1.88
CC-1672	79.25		0.50		
CC-1684	91.25				
CC-1696	103.25				

All dimensions in inches. Zinc anodes optional.

NOTE: We reserve the right to make reasonable design changes without notice.