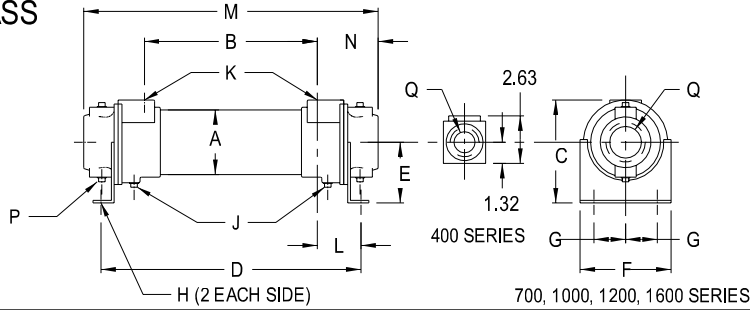
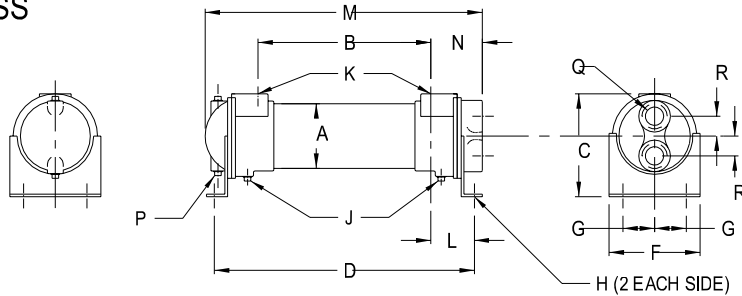


--CAB SERIES-- DIMENSIONS

SINGLE PASS

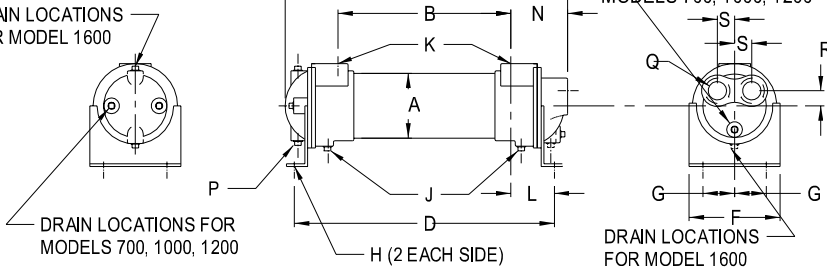


TWO PASS



FOUR PASS

DRAIN LOCATIONS
FOR MODEL 1600



SINGLE PASS				
MODEL	M	N	P NPTF.	Q NPTF.
CAB-401	11.24	1.81	—	1.00
CAB-402	20.24			
CAB-701	13.47			
CAB-702	22.47	3.24	(4) 0.38	1.50
CAB-703	31.47			
CAB-1002	23.60			
CAB-1003	32.60			
CAB-1004	41.60	4.05	(4) 0.38	2.00
CAB-1005	50.60			
CAB-1202	24.38			
CAB-1203	33.25			
CAB-1204	42.12			
CAB-1205	51.12	4.88	(4) 0.50	3.00
CAB-1206	60.25			
CAB-1207	69.25			
CAB-1208	78.12			
CAB-1602	26.62			
CAB-1603	35.62			
CAB-1604	44.62	6.13	(4) 0.50	4.00
CAB-1605	53.62			
CAB-1606	62.62			
CAB-1607	71.62			
CAB-1608	80.62			
CAB-1609	89.62			
CAB-1610	98.62			

TWO PASS

MODEL	M	N	P NPTF.	Q NPTF.	R
CAB-401	—	—	—	—	—
CAB-402	—	—	—	—	—
CAB-701	13.28	3.30	(2) 0.38	1.00	0.88
CAB-702	22.28				
CAB-703	31.28				
CAB-1002	23.29	3.80	(2) 0.38	1.50	1.19
CAB-1003	32.29				
CAB-1004	41.29				
CAB-1005	50.29				
CAB-1202	23.94	4.56	(2) 0.50	2.00	1.44
CAB-1203	32.81				
CAB-1204	41.69				
CAB-1205	50.69				
CAB-1206	59.81				
CAB-1207	68.81				
CAB-1208	77.69				
CAB-1602	25.10				
CAB-1603	34.10				
CAB-1604	43.10	6.38	(2) 0.50	2.50	1.88
CAB-1605	52.10				
CAB-1606	61.10				
CAB-1607	70.10				
CAB-1608	79.10				
CAB-1609	88.10				
CAB-1610	97.10				

FOUR PASS

MODEL	M	N	P NPTF.	Q NPTF.	R	S
CAB-401	—	—	—	—	—	—
CAB-402	—	—	—	—	—	—
CAB-701	13.42	3.24	(3) 0.38	0.75	0.62	0.88
CAB-702	22.42					
CAB-703	31.42					
CAB-1002	23.55	4.06	(3) 0.38	1.00	0.75	1.34
CAB-1003	32.55					
CAB-1004	41.55					
CAB-1005	50.55					
CAB-1202	24.44					
CAB-1203	33.31	4.90	(2) 0.38 (1) 0.50	1.50	1.12	1.40
CAB-1204	42.19					
CAB-1205	51.19					
CAB-1206	60.31					
CAB-1207	69.31					
CAB-1208	78.19					
CAB-1602	26.66					
CAB-1603	35.66					
CAB-1604	44.66					
CAB-1605	53.66	6.38	(3) 0.50	2.00	1.38	1.88
CAB-1606	62.66					
CAB-1607	71.66					
CAB-1608	80.66					
CAB-1609	89.66					
CAB-1610	98.66					

COMMON DIMENSIONS												
MODEL	A	B	C	D	E	F	G	H	L	J NPTF.	K NPTF.	WEIGHT (LBS.)
CAB-401	2.125	7.62	3.50	11.06	1.94	2.62	0.88	0.41 Dia.	1.72	—	0.50	7
CAB-402	16.62	20.06		10								
CAB-701	3.656	7.00	6.25	12.38	3.62	5.25	1.50	0.44x1.00	2.89	(2) 0.38	1.00	17
CAB-702		16.00		21.38								25
CAB-703		25.00		30.38								30
CAB-1002	5.125	15.50	7.38	21.62	4.00	6.75	2.00	0.44x1.00	3.06	(6) 0.38	1.50	40
CAB-1003		24.50		30.62								50
CAB-1004		33.50		39.62								60
CAB-1005		42.50		48.62								70
CAB-1202	6.125	14.62	8.81	21.50	4.75	7.50	2.50	0.44x1.00	3.44	(6) 0.38	2.00	55
CAB-1203		23.50		30.38								70
CAB-1204		32.38		39.25								90
CAB-1205		41.38		48.25								110
CAB-1206		50.50		57.38								130
CAB-1207		59.50		66.38								150
CAB-1208		68.38		75.25								170
CAB-1602		8.000		13.60								12.10
CAB-1603	22.60		31.38	140								
CAB-1604	31.60		40.38	205								
CAB-1605	40.60		49.38	245								
CAB-1606	49.60		58.38	259								
CAB-1607	58.60		67.38	270								
CAB-1608	67.60		76.38	290								
CAB-1609	76.60		85.38	315								
CAB-1610	85.60		94.38	335								

All dimensions in inches. Zinc anodes optional.

NOTE: We reserve the right to make reasonable design changes without notice.